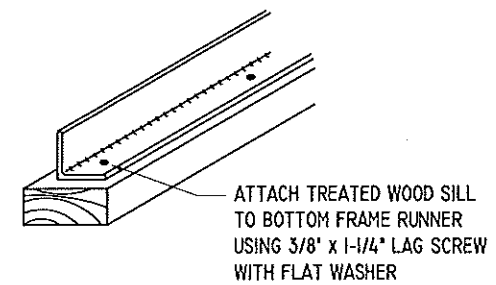


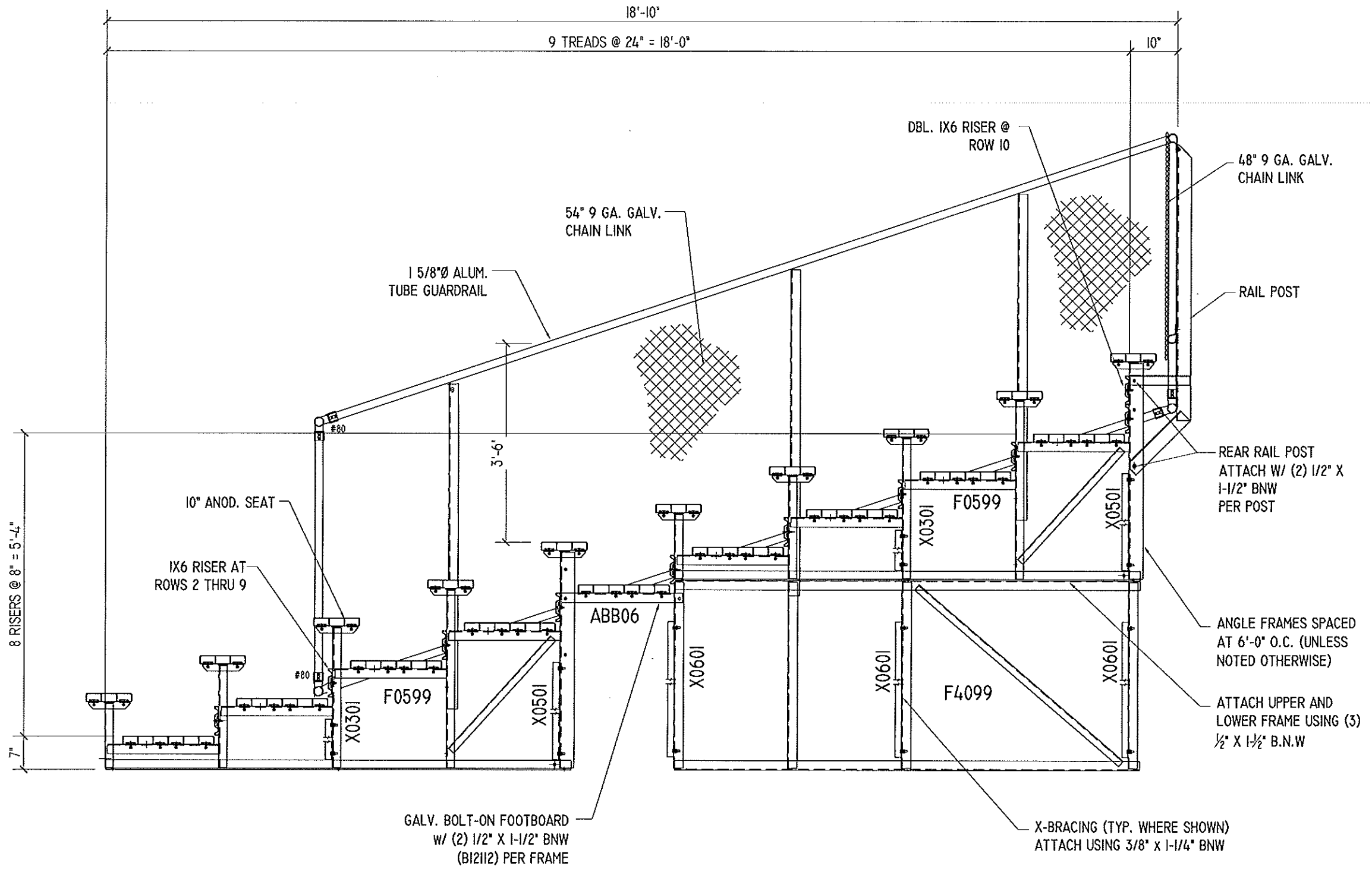
LOCAL CODES AND SPECIFICATIONS WILL VARY FROM REGION TO REGION AND WILL ALSO CHANGE OVER TIME. IT IS THE BUYER'S RESPONSIBILITY TO CHECK LOCAL CODES FOR COMPLIANCE.

SEATING PLAN

SCALE: NONE
NET SEATS = 113

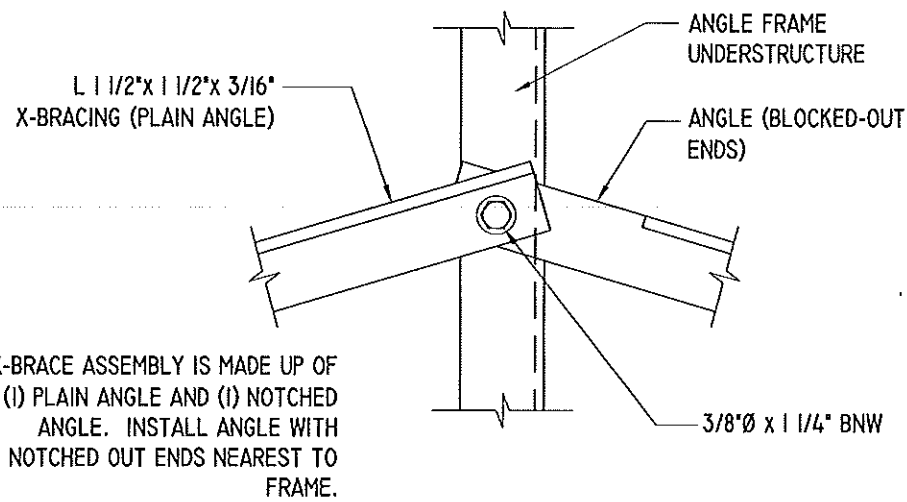


MUD SILL ATTACHMENT



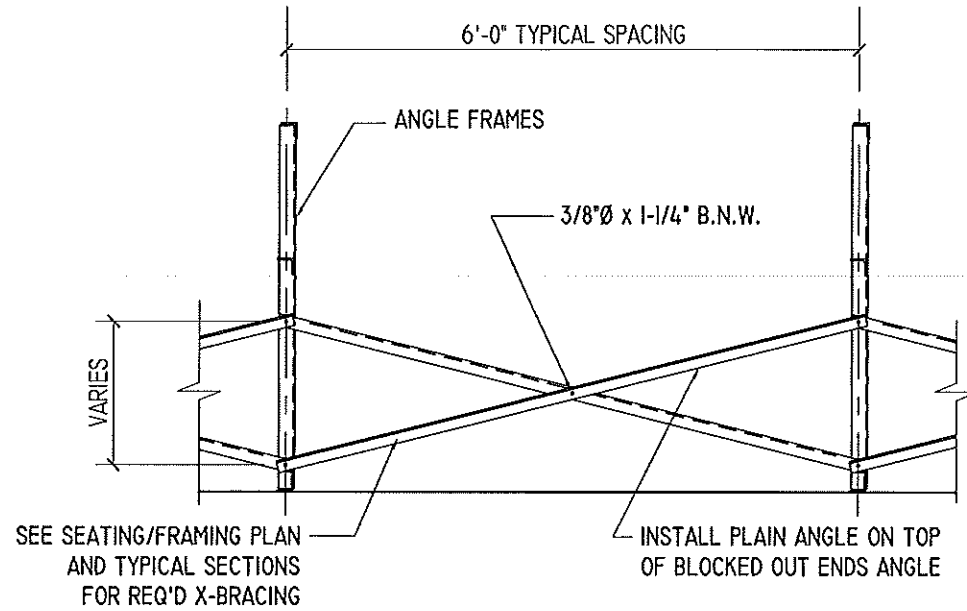
TYPICAL SECTION THRU BLEACHER

SCALE: 1/2" = 1'-0"



TYPICAL X-BRACE TO FRAME CONN.

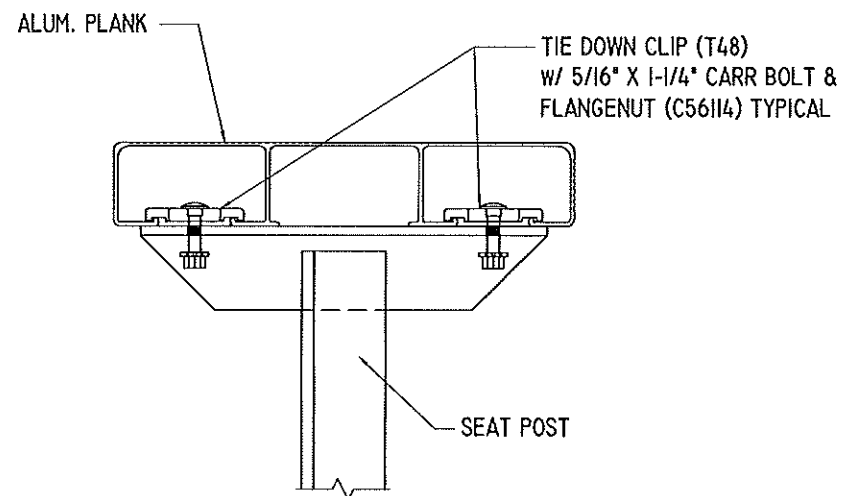
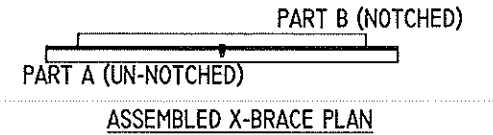
SCALE: 3" = 1'-0"



TYPICAL BRACING LAYOUT

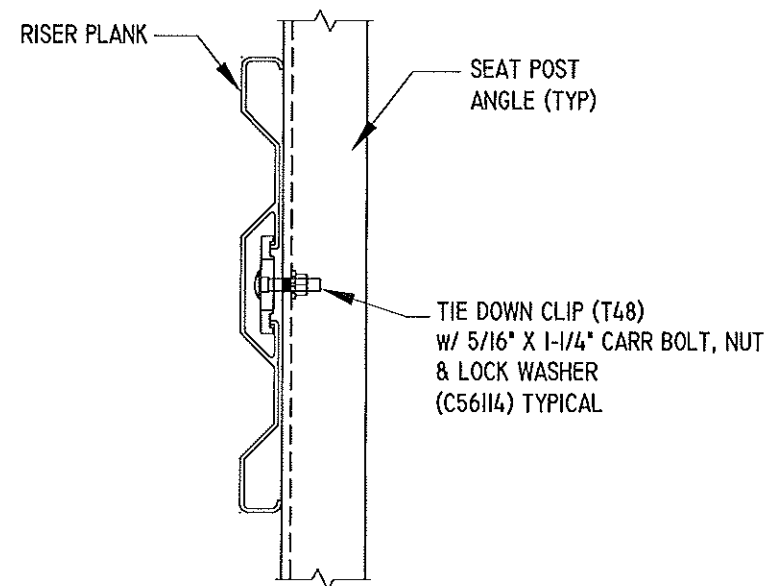
SCALE: 1/2" = 1'-0"

PRE-ASSEMBLE X-BRACE SETS. EACH SET CONSISTS OF A 'PART A (UN-NOTCHED)' AND A 'PART B (NOTCHED)'. PLACE THE PIECES TOGETHER AT THE FLAT SIDES AND CONNECT USING A 3/8" x 1-1/4" B.N.W.



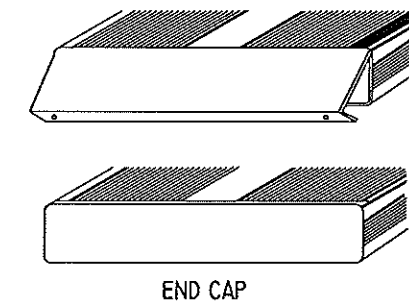
SEAT PLANK INSTALLATION

SCALE: 3" = 1'-0"



TYPICAL RISER INSTALLATION

SCALE: 3" = 1'-0"



1. LOCATE THE CHANNEL END CAP AS SHOWN, WITH THE WIDER FLANGE ON BOTTOM.

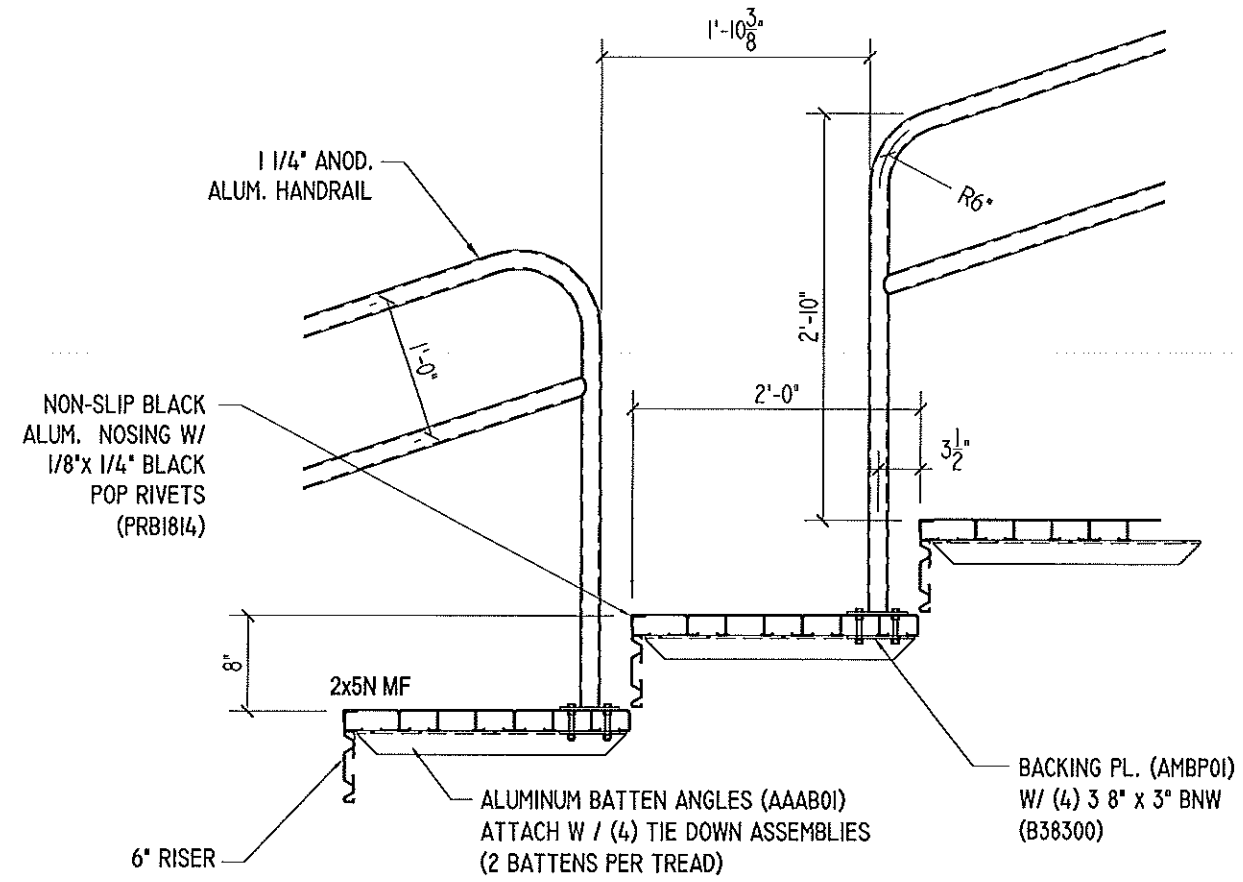
2. TAP THE CHANNEL INTO PLACE WITH A RUBBER Mallet OR SOFT WOOD.

3. DRILL (2) No.8 x 3/4" TEK SCREWS THRU END CAP AND BOTTOM FLANGE OF PLANK

4. ENDCAPS WITH STICKERS ARE TO GO AT ENDS OF SEAT PLANKS, PLAIN ENDCAPS GO ON ALL OTHER BOARDS.

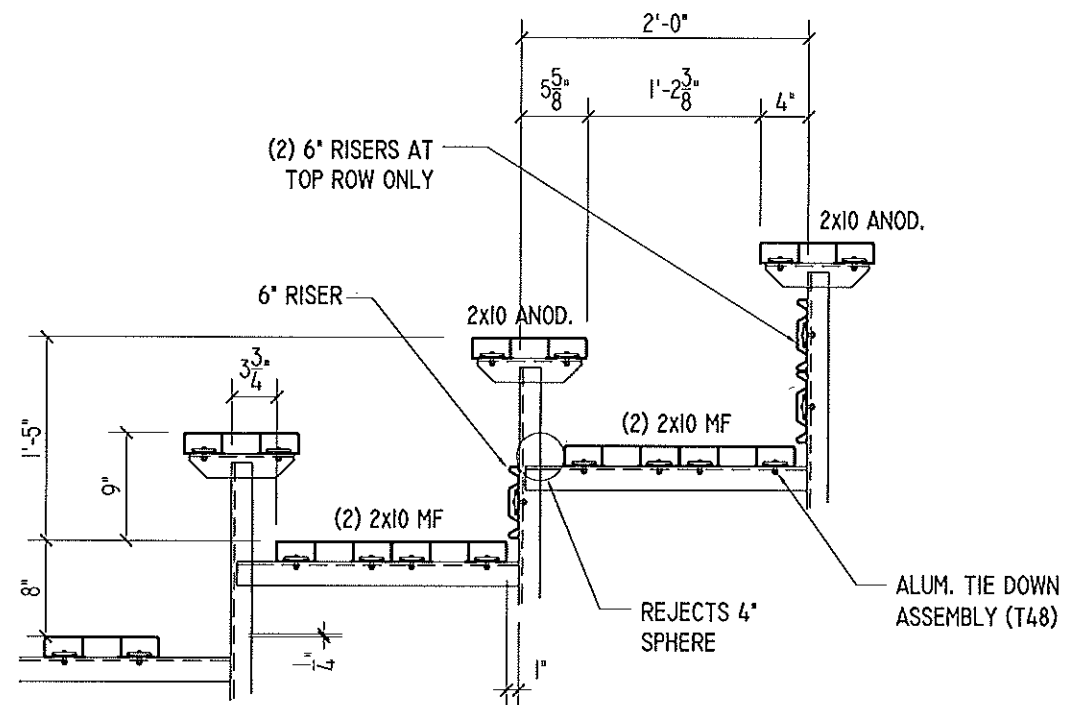
ENDCAP INSTALLATION DETAIL

SCALE: 3" = 1'-0"



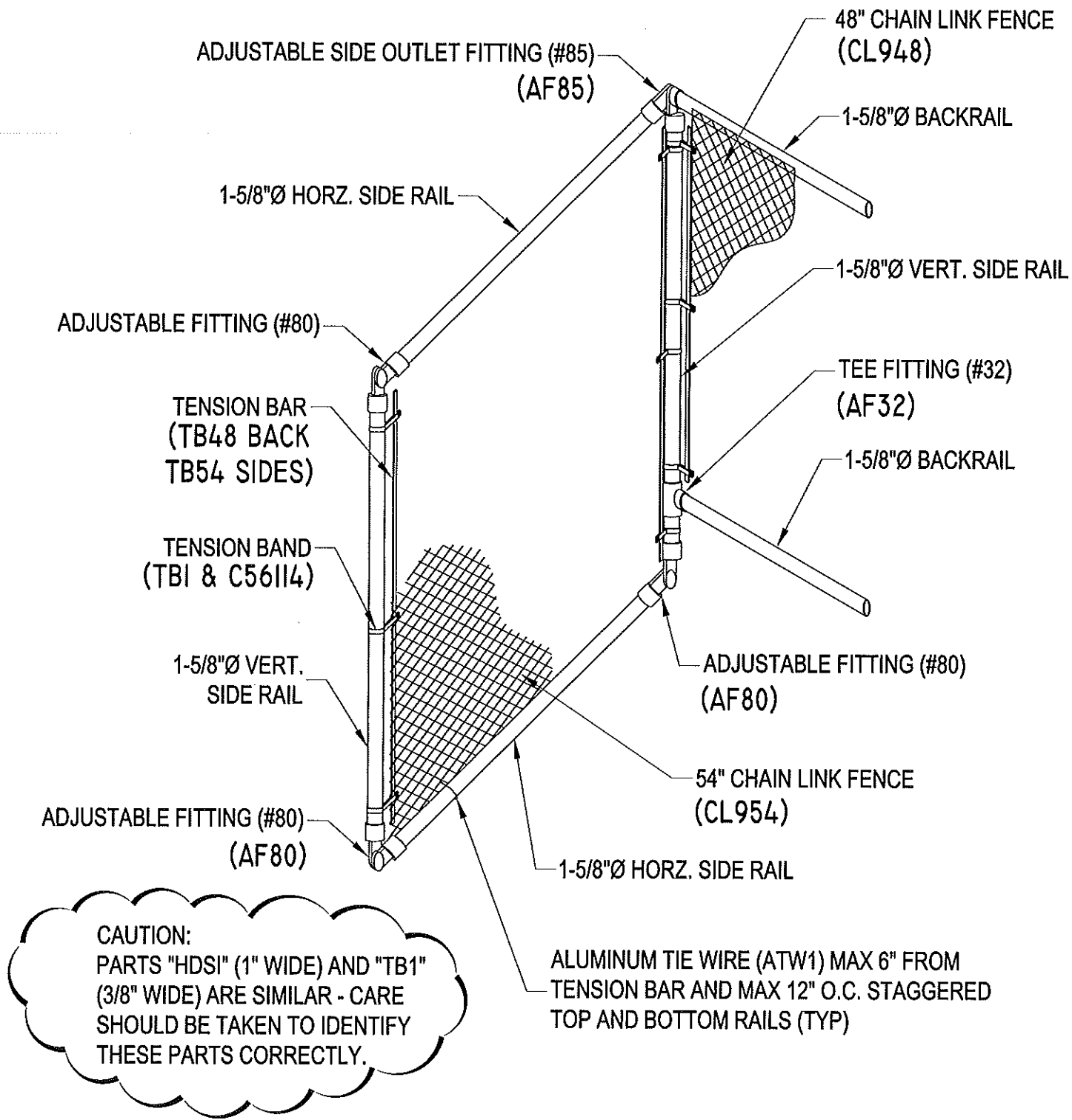
CONDITION AT AISLE

SCALE: 3/4" = 1'-0"



CONDITION AT SEATS

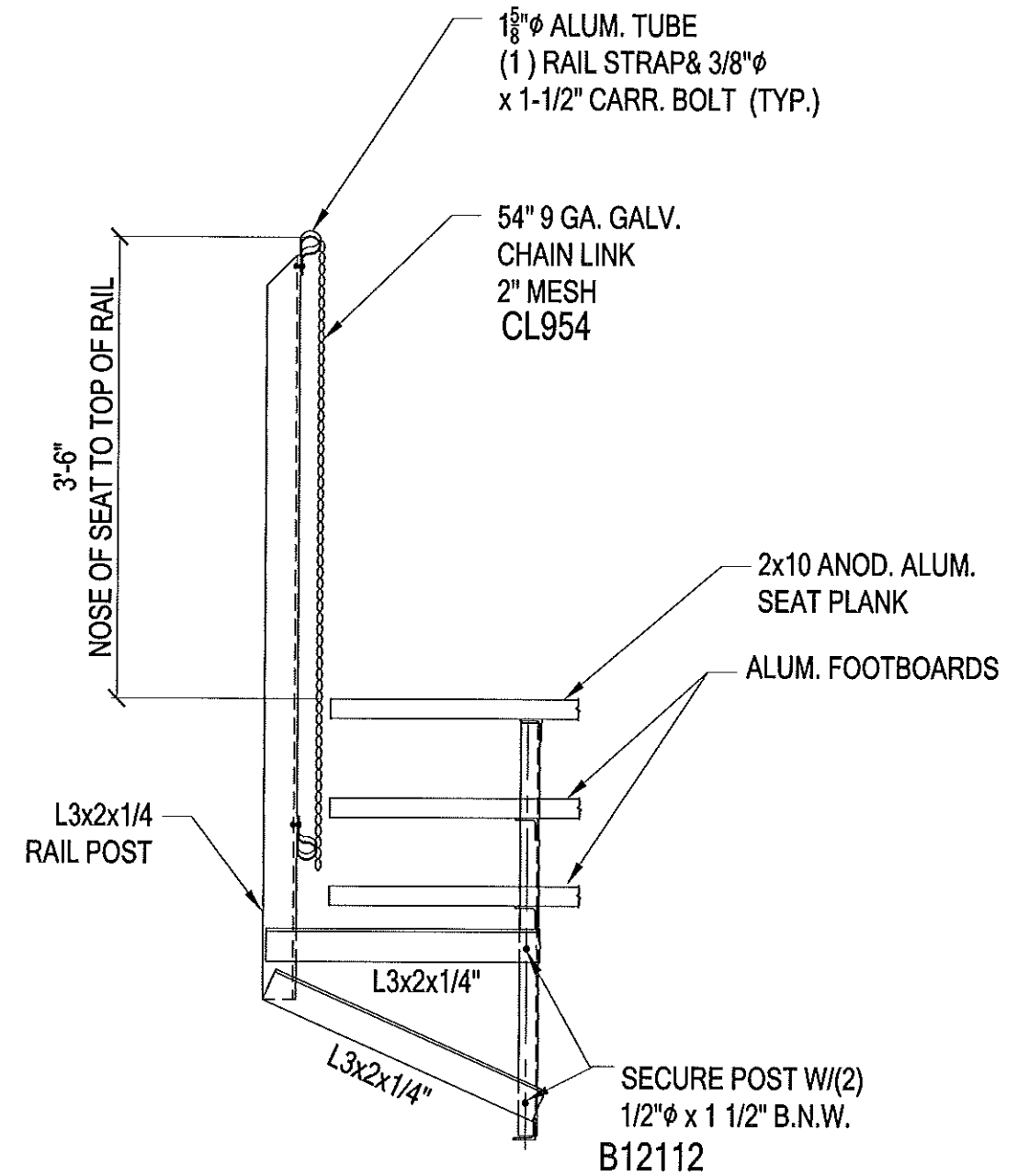
SCALE: 3/4" = 1'-0"



CAUTION:
PARTS "HDSI" (1" WIDE) AND "TB1"
(3/8" WIDE) ARE SIMILAR - CARE
SHOULD BE TAKEN TO IDENTIFY
THESE PARTS CORRECTLY.

ISOMETRIC VIEW

CONNECTION DETAIL OF BACK RAIL TO SIDE RAIL



RAIL POST CONNECTION DETAIL